

7.1 T2000-100 RF PCB

T2000-100 Parts List (IPN 220-01331-02)

| Parts List Amendments | |
|-----------------------|--|
| | |

| Ref | Var | IPN | Description | Ref | Var | IPN | Description |
|--------|-----|--------------|----------------------------------------|------|-----|--------------|-----------------------------------------|
| 2*6WAY | | 240-00020-51 | PLUG 12 WAY 2*6 FLAT CABLE TERMN | C190 | | 015-23470-08 | CAP CER 0805 CHIP 470P 10% X7R 50V |
| C1 | | 015-23680-08 | CAP CER 0805 CHIP 680P 10% X7R 50V | C191 | | 015-24100-08 | CAP CER 0805 CHIP 1N 10% X7R 50V |
| C2 | | 015-23680-08 | CAP CER 0805 CHIP 680P 10% X7R 50V | C192 | | 015-22330-01 | CAP CER 0805 CHIP 33P 5% NPO 50V |
| C3 | | 015-23680-08 | CAP CER 0805 CHIP 680P 10% X7R 50V | C193 | | 020-57470-10 | CAP ELECT AI RDL 4U7 50V LO ESR |
| C100 | | 015-25100-08 | CAP CER 0805 CHIP 10N 10% X7R 50V | C194 | | 015-23680-08 | CAP CER 0805 CHIP 680P 10% X7R 50V |
| C101 | | 015-21820-01 | CAP CER 0805 CHIP 8P2 +/-0.25P NPO 50V | C195 | | 015-23680-08 | CAP CER 0805 CHIP 680P 10% X7R 50V |
| C102 | | 015-22680-01 | CAP CER 0805 CHIP 68P 5% NPO 50V | C197 | | 015-06100-08 | CAP CER 1206 CHIP 100N 10% X7R 50V |
| C103 | | 015-22120-01 | CAP CER 0805 CHIP 12P 5% NPO 50V | C198 | | 015-21100-01 | CAP CER 0805 CHIP 1P0 +/-0.25P NPO 50V |
| C104 | | 015-06100-08 | CAP CER 1206 CHIP 100N 10% X7R 50V | C199 | | 015-24100-08 | CAP CER 0805 CHIP 1N 10% X7R 50V |
| C105 | | 015-21120-01 | CAP CER 0805 CHIP 1P2 +/-0.25 NPO 50V | C200 | | 015-25100-08 | CAP CER 0805 CHIP 10N 10% X7R 50V |
| C106 | | 015-23680-08 | CAP CER 0805 CHIP 680P 10% X7R 50V | C201 | | 015-25100-08 | CAP CER 0805 CHIP 10N 10% X7R 50V |
| C107 | | 015-21560-01 | CAP CER 0805 CHIP 5P6 +/-0.25P NPO 50V | C205 | | 015-24100-08 | CAP CER 0805 CHIP 1N 10% X7R 50V |
| C108 | | 015-25100-08 | CAP CER 0805 CHIP 10N 10% X7R 50V | C206 | | 015-06100-08 | CAP CER 1206 CHIP 100N 10% X7R 50V |
| C109 | | 015-21220-01 | CAP CER 0805 CHIP 2P2 +/-0.25P NPO 50V | C207 | | 015-25100-08 | CAP CER 0805 CHIP 10N 10% X7R 50V |
| C110 | | 015-23680-08 | CAP CER 0805 CHIP 680P 10% X7R 50V | C208 | | 015-25100-08 | CAP CER 0805 CHIP 10N 10% X7R 50V |
| C111 | | 015-21820-01 | CAP CER 0805 CHIP 8P2 +/-0.25P NPO 50V | C209 | | 015-25100-08 | CAP CER 0805 CHIP 10N 10% X7R 50V |
| C112 | | 015-21180-01 | CAP CER 0805 CHIP 1P8 +/-0.25 NPO 50V | C210 | | 015-25100-08 | CAP CER 0805 CHIP 10N 10% X7R 50V |
| C113 | | 015-21220-01 | CAP CER 0805 CHIP 2P2 +/-0.25P NPO 50V | C211 | | 015-23150-01 | CAP CER 0805 CHIP 150P 5% NPO 50V |
| C114 | | 015-23680-08 | CAP CER 0805 CHIP 680P 10% X7R 50V | C212 | | 015-21390-01 | CAP CER 0805 CHIP 3P9 +/-0.25P NPO 50V |
| C115 | | 015-22120-01 | CAP CER 0805 CHIP 12P 5% NPO 50V | C213 | | 020-58470-05 | CAP ELECT AI RDL 47M 16V 6.3X7MM |
| C116 | | 015-24100-08 | CAP CER 0805 CHIP 1N 10% X7R 50V | C214 | | 015-23680-08 | CAP CER 0805 CHIP 680P 10% X7R 50V |
| C117 | | 015-21180-01 | CAP CER 0805 CHIP 1P8 +/-0.25 NPO 50V | C215 | | 020-57470-10 | CAP ELECT AI RDL 4U7 50V LO ESR |
| C118 | | 015-21220-01 | CAP CER 0805 CHIP 2P2 +/-0.25P NPO 50V | C216 | | 015-25100-08 | CAP CER 0805 CHIP 10N 10% X7R 50V |
| C119 | | 015-23680-08 | CAP CER 0805 CHIP 680P 10% X7R 50V | C217 | | 020-58470-05 | CAP ELECT AI RDL 47M 16V 6.3X7MM |
| C120 | | 015-23680-08 | CAP CER 0805 CHIP 680P 10% X7R 50V | C218 | | 020-57470-10 | CAP ELECT AI RDL 4U7 50V LO ESR |
| C121 | | 015-21820-01 | CAP CER 0805 CHIP 8P2 +/-0.25P NPO 50V | C219 | | 020-58470-05 | CAP ELECT AI RDL 47M 16V 6.3X7MM |
| C122 | | 015-21560-01 | CAP CER 0805 CHIP 5P6 +/-0.25P NPO 50V | C220 | | 022-55150-10 | CAP MYLAR AI 15N 5% 63V POTTED |
| C123 | | 015-23680-08 | CAP CER 0805 CHIP 680P 10% X7R 50V | C221 | | 022-57100-02 | CAP MYLAR AI 1M 20% 50V POTTED |
| C124 | | 015-21680-01 | CAP CER 0805 CHIP 6P8 +/-0.25P NPO 50V | C222 | | 022-06100-15 | CAP MET POLYSTR 100N 5% 50V 5.6MM HI |
| C125 | | 015-21560-01 | CAP CER 0805 CHIP 5P6 +/-0.25P NPO 50V | C223 | | 015-23680-08 | CAP CER 0805 CHIP 680P 10% X7R 50V |
| C126 | | 015-21820-01 | CAP CER 0805 CHIP 8P2 +/-0.25P NPO 50V | C224 | | 015-23680-08 | CAP CER 0805 CHIP 680P 10% X7R 50V |
| C127 | | 015-22220-01 | CAP CER 0805 CHIP 22P 5% NPO 50V | C225 | | 015-23680-08 | CAP CER 0805 CHIP 680P 10% X7R 50V |
| C128 | | 015-22330-01 | CAP CER 0805 CHIP 33P 5% NPO 50V | C226 | | 015-21100-01 | CAP CER 0805 CHIP 1P0 +/-0.25P NPO 50V |
| C129 | | 015-25100-08 | CAP CER 0805 CHIP 10N 10% X7R 50V | C227 | | 015-23680-08 | CAP CER 0805 CHIP 680P 10% X7R 50V |
| C130 | | 015-25100-08 | CAP CER 0805 CHIP 10N 10% X7R 50V | C228 | | 015-22270-01 | CAP CER 0805 CHIP 27P 5% NPO 50V |
| C131 | | 015-22330-01 | CAP CER 0805 CHIP 33P 5% NPO 50V | C229 | | 020-58470-05 | CAP ELECT AI RDL 47M 16V 6.3X7MM |
| C133 | | 015-23270-01 | CAP CER 0805 CHIP 270P 5% NPO 50V | C230 | | 015-24470-08 | CAP CER 0805 CHIP 4N7 10% X7R 50V |
| C134 | | 015-22100-01 | CAP CER 0805 CHIP 10P +/-0.5P NPO 50V | C231 | | 015-23680-08 | CAP CER 0805 CHIP 680P 10% X7R 50V |
| C135 | | 015-23150-01 | CAP CER 0805 CHIP 150P 5% NPO 50V | C232 | | 015-22100-01 | CAP CER 0805 CHIP 10P +/-0.5P NPO 50V |
| C136 | | 015-22270-01 | CAP CER 0805 CHIP 27P 5% NPO 50V | C233 | | 020-57470-10 | CAP ELECT AI RDL 4U7 50V LO ESR |
| C137 | | 015-23680-08 | CAP CER 0805 CHIP 680P 10% X7R 50V | C234 | | 020-57470-10 | CAP ELECT AI RDL 4U7 50V LO ESR |
| C138 | | 015-22270-01 | CAP CER 0805 CHIP 27P 5% NPO 50V | C235 | | 015-25100-08 | CAP CER 0805 CHIP 10N 10% X7R 50V |
| C140 | | 015-22100-01 | CAP CER 0805 CHIP 10P +/-0.5P NPO 50V | C236 | | 015-21270-01 | CAP CER 0805 CHIP 2P7 +/-0.25P NPO 50V |
| C141 | | 015-23270-01 | CAP CER 0805 CHIP 270P 5% NPO 50V | C237 | | 015-24100-08 | CAP CER 0805 CHIP 1N 10% X7R 50V |
| C145 | | 015-23100-01 | CAP CER 0805 CHIP 100P 5% NPO 50V | C238 | | 015-25100-08 | CAP CER 0805 CHIP 10N 10% X7R 50V |
| C147 | | 015-25100-08 | CAP CER 0805 CHIP 10N 10% X7R 50V | C239 | | 015-23680-08 | CAP CER 0805 CHIP 680P 10% X7R 50V |
| C148 | | 015-22180-01 | CAP CER 0805 CHIP 18P 5% NPO 50V | C240 | | 015-23680-08 | CAP CER 0805 CHIP 680P 10% X7R 50V |
| C149 | | 015-24100-08 | CAP CER 0805 CHIP 1N 10% X7R 50V | C241 | | 015-23680-08 | CAP CER 0805 CHIP 680P 10% X7R 50V |
| C150 | | 015-23100-01 | CAP CER 0805 CHIP 100P 5% NPO 50V | C242 | | 015-23680-08 | CAP CER 0805 CHIP 680P 10% X7R 50V |
| C151 | | 015-06100-08 | CAP CER 1206 CHIP 100N 10% X7R 50V | C243 | | 015-23680-08 | CAP CER 0805 CHIP 680P 10% X7R 50V |
| C152 | | 015-23100-01 | CAP CER 0805 CHIP 100P 5% NPO 50V | C244 | | 015-21680-01 | CAP CER 0805 CHIP 6P8 +/-0.25P NPO 50V |
| C152A | | 015-25100-08 | CAP CER 0805 CHIP 10N 10% X7R 50V | C245 | | 015-21560-01 | CAP CER 0805 CHIP 5P6 +/-0.25P NPO 50V |
| C153 | | 020-57470-10 | CAP ELECT AI RDL 4U7 50V LO ESR | C246 | | 015-23680-08 | CAP CER 0805 CHIP 680P 10% X7R 50V |
| C153A | | 015-23100-01 | CAP CER 0805 CHIP 100P 5% NPO 50V | C247 | | 015-21470-01 | CAP CER 0805 CHIP 4P7 +/-0.25P NPO 50V |
| C154 | | 015-25100-08 | CAP CER 0805 CHIP 10N 10% X7R 50V | C248 | | 015-25100-08 | CAP CER 0805 CHIP 10N 10% X7R 50V |
| C155 | | 015-23100-01 | CAP CER 0805 CHIP 100P 5% NPO 50V | C249 | | 020-58470-05 | CAP ELECT AI RDL 47M 16V 6.3X7MM |
| C156 | | 015-22220-01 | CAP CER 0805 CHIP 22P 5% NPO 50V | C250 | | 015-23680-08 | CAP CER 0805 CHIP 680P 10% X7R 50V |
| C157 | | 015-06100-08 | CAP CER 1206 CHIP 100N 10% X7R 50V | C251 | | 015-23680-08 | CAP CER 0805 CHIP 680P 10% X7R 50V |
| C158 | | 015-24100-08 | CAP CER 0805 CHIP 1N 10% X7R 50V | C252 | | 015-23680-08 | CAP CER 0805 CHIP 680P 10% X7R 50V |
| C159 | | 015-23270-01 | CAP CER 0805 CHIP 270P 5% NPO 50V | C288 | | 015-23330-08 | CAP CER 0805 CHIP 330P 10% X7R 50V |
| C160 | | 015-23100-01 | CAP CER 0805 CHIP 100P 5% NPO 50V | C300 | | 020-07470-04 | CAP ELECT RADL 4M7 25V 20% 8X13MM SOLID |
| C174 | | 020-58470-05 | CAP ELECT AI RDL 47M 16V 6.3X7MM | C301 | | 015-22470-01 | CAP CER 0805 CHIP 47P 5% NPO 50V |
| C175 | | 015-06100-08 | CAP CER 1206 CHIP 100N 10% X7R 50V | C302 | | 015-22120-01 | CAP CER 0805 CHIP 12P 5% NPO 50V |
| C176 | | 015-06100-08 | CAP CER 1206 CHIP 100N 10% X7R 50V | C303 | | 015-06100-08 | CAP CER 1206 CHIP 100N 10% X7R 50V |
| C179 | | 015-25100-08 | CAP CER 0805 CHIP 10N 10% X7R 50V | C304 | | 015-23330-08 | CAP CER 0805 CHIP 330P 10% X7R 50V |
| C180 | | 015-06100-08 | CAP CER 1206 CHIP 100N 10% X7R 50V | C305 | | 015-22330-01 | CAP CER 0805 CHIP 33P 5% NPO 50V |
| C181 | | 015-06100-08 | CAP CER 1206 CHIP 100N 10% X7R 50V | C306 | | 015-22270-01 | CAP CER 0805 CHIP 27P 5% NPO 50V |
| C185 | | 015-25100-08 | CAP CER 0805 CHIP 10N 10% X7R 50V | C307 | | 015-06100-08 | CAP CER 1206 CHIP 100N 10% X7R 50V |
| C186 | | 015-25100-08 | CAP CER 0805 CHIP 10N 10% X7R 50V | C309 | | 015-23330-08 | CAP CER 0805 CHIP 330P 10% X7R 50V |
| C187 | | 015-24100-08 | CAP CER 0805 CHIP 1N 10% X7R 50V | C310 | | 015-24100-08 | CAP CER 0805 CHIP 1N 10% X7R 50V |
| C188 | | 015-23100-01 | CAP CER 0805 CHIP 100P 5% NPO 50V | C311 | | 015-24100-08 | CAP CER 0805 CHIP 1N 10% X7R 50V |
| C189 | | 015-23470-08 | CAP CER 0805 CHIP 470P 10% X7R 50V | C312 | | 015-22560-01 | CAP CER 0805 CHIP 56P 5% NPO 50V |
| | | | | C313 | | 015-23100-01 | CAP CER 0805 CHIP 100P 5% NPO 50V |

| Ref | Var | IPN | Description | Ref | Var | IPN | Description |
|-------|-----|--------------|------------------------------------------|-------|-----|--------------|-------------------------------------------|
| C314 | | 015-23100-01 | CAP CER 0805 CHIP 100P 5% NPO 50V | IC404 | | 002-00078-05 | (S) IC MC7805ACT 5V REG(LINEAR)1AMP TO- |
| C315 | | 015-23680-08 | CAP CER 0805 CHIP 680P 10% X7R 50V | L101 | | 052-08145-15 | COIL A/W 1.5T/4.5MM HOR 0.8MM WIRE |
| C316 | | 015-23680-08 | CAP CER 0805 CHIP 680P 10% X7R 50V | L104 | | 050-00016-77 | COIL NE545BNAS-100085 48NH 5 1/2T WITH B |
| C317 | | 015-23680-08 | CAP CER 0805 CHIP 680P 10% X7R 50V | L105 | | 050-00016-77 | COIL NE545BNAS-100085 48NH 5 1/2T WITH B |
| C318 | | 015-23680-08 | CAP CER 0805 CHIP 680P 10% X7R 50V | L106 | | 050-00016-77 | COIL NE545BNAS-100085 48NH 5 1/2T WITH B |
| C319 | | 015-23680-08 | CAP CER 0805 CHIP 680P 10% X7R 50V | L107 | | 050-00016-65 | COIL BALUN 7.2MM 2 5X0.5PINS 5T/4 456DB-1 |
| C320 | | 015-02560-03 | CAP CER CHIP 56P 5% 500V HIQ GRH111 2.8M | L108 | | 050-00016-65 | COIL BALUN 7.2MM 2 5X0.5PINS 5T/4 456DB-1 |
| C321 | | 015-06100-08 | CAP CER 1206 CHIP 100N 10% X7R 50V | L109 | | 052-08135-25 | COIL A/W 2.5T/3.5MM HOR 0.8MM WIRE |
| C322 | | 015-02200-03 | CAP CER CHIP 22P 5% NPO 500V HIQ GRH111 | L110 | | 056-00021-61 | IND FXD 1.0UH 10% PHENOLIC 10MM L/S |
| C323 | | 015-03680-06 | CAP CER 1210 CHIP 680P NPO 200V GRM42 | L114 | | 050-00016-62 | COIL IF 1UH AT 30MHZ 6MMSQX6.2MMH CAN 29 |
| C324 | | 015-03100-06 | CAP CER 1210 CHIP 100P NPO 500V GRM42-2 | L116 | | 050-00016-62 | COIL IF 1UH AT 30MHZ 6MMSQX6.2MMH CAN 29 |
| C325 | | 015-03100-06 | CAP CER 1210 CHIP 100P NPO 500V GRM42-2 | L117 | | 050-00016-65 | COIL BALUN 7.2MM 2 5X0.5PINS 5T/4 456DB-1 |
| C326 | | 015-24100-08 | CAP CER 0805 CHIP 1N 10% X7R 50V | L118 | | 050-00016-65 | COIL BALUN 7.2MM 2 5X0.5PINS 5T/4 456DB-1 |
| C327 | | 015-06100-08 | CAP CER 1206 CHIP 100N 10% X7R 50V | L119 | | 050-00016-55 | COIL TAIT NO 655 455KHZ QUAD COIL 7MM CA |
| C328 | | 015-02680-06 | CAP CER 1210 CHIP 68P NPO 500V GRM42-2 | L120 | | 057-10005-03 | IND 0805 BLM21B05 EMI SUPRSN 5 OHM AT 10 |
| C329 | | 015-02150-06 | CAP CER 1210 CHIP 15P NPO 500V GRM42-2 | L121 | | 057-10120-03 | IND 0805 BLM21A121 EMI SUPRSN 120 OHM @ |
| C330 | | 015-02560-06 | CAP CER 1210 CHIP 56P NPO 500V GRM42-2 | L200 | | 057-10005-03 | IND 0805 BLM21B05 EMI SUPRSN 5 OHM AT 10 |
| C331 | | 015-02680-06 | CAP CER 1210 CHIP 68P NPO 500V GRM42-2 | L202 | | 056-10100-00 | IND FXD SMD 100NH 3.2*2.5*1.6 SIEMENS SM |
| C332 | | 015-02180-06 | CAP CER 1210 CHIP 18P NPO 500V GRM42-2 | L203 | | 050-00016-62 | COIL IF 1UH AT 30MHZ 6MMSQX6.2MMH CAN 29 |
| C333 | | 015-02680-06 | CAP CER 1210 CHIP 68P NPO 500V GRM42-2 | L204 | | 056-10820-00 | IND FXD SMD 820NH 3.2*2.5*1.6 SIEMENS SM |
| C334 | | 015-02680-06 | CAP CER 1210 CHIP 68P NPO 500V GRM42-2 | L205 | | 056-10820-00 | IND FXD SMD 820NH 3.2*2.5*1.6 SIEMENS SM |
| C334A | | 015-02680-06 | CAP CER 1210 CHIP 68P NPO 500V GRM42-2 | L206 | | 055-01008-01 | COIL TOROID 57NH 15P 11T T2300 |
| C335 | | 015-01220-06 | CAP CER 1210 CHIP 2P2 NPO 500V GRM42-2 | L207 | | 056-10820-00 | IND FXD SMD 820NH 3.2*2.5*1.6 SIEMENS SM |
| C336 | | 015-03680-06 | CAP CER 1210 CHIP 680P NPO 200V GRM42 | L208 | | 057-00047-00 | IND FXD SMD 47NH 20% MUR LQN2A |
| C337 | | 015-23680-08 | CAP CER 0805 CHIP 680P 10% X7R 50V | L210 | | 057-00047-00 | IND FXD SMD 47NH 20% MUR LQN2A |
| C338 | | 015-23100-01 | CAP CER 0805 CHIP 100P 5% NPO 50V | L301 | | 052-08125-25 | COIL A/W 2.5T/2.5MM HOR 0.8MM WIRE |
| C339 | | 015-02100-06 | CAP CER 1210 CHIP 10P 5% NPO 500V GRM42 | L303 | | 056-00021-60 | IND FXD 330NH 6.6X2.7MM AXIAL NON MAGNET |
| C340 | | 015-02120-06 | CAP CER 1210 CHIP 12P NPO 500V GRM42-2 | L304 | | 052-08125-25 | COIL A/W 2.5T/2.5MM HOR 0.8MM WIRE |
| C341 | | 015-02120-06 | CAP CER 1210 CHIP 12P NPO 500V GRM42-2 | L305 | | 052-08125-45 | COIL A/W 4.5T/2.5MM HOR 0.8MM WIRE |
| C342 | | 015-03680-03 | CAP CER CHIP 680P 5% NPO 100V HIQ GRH111 | L306 | | 057-10005-03 | IND 0805 BLM21B05 EMI SUPRSN 5 OHM AT 10 |
| C343 | | 015-01220-06 | CAP CER 1210 CHIP 2P2 NPO 500V GRM42-2 | L310 | | 052-08120-15 | COIL A/W 1.5T/2MM HOR 0.8MM WIRE |
| C344 | | 015-01470-06 | CAP CER 1210 CHIP 4P7 NPO 500V GRM42-2 | L311 | | 052-08135-85 | COIL A/W 8.5T/3.5MM HOR 0.8MM WIRE |
| C345 | | 015-23680-08 | CAP CER 0805 CHIP 680P 10% X7R 50V | L312 | | 056-00021-60 | IND FXD 330NH 6.6X2.7MM AXIAL NON MAGNET |
| C346 | | 015-21560-01 | CAP CER 0805 CHIP 5P6 +/-0.25P NPO 50V | L315 | | 065-00010-01 | BEAD FERRITE 3B 6 HOLE |
| C347 | | 015-21560-01 | CAP CER 0805 CHIP 5P6 +/-0.25P NPO 50V | L316 | | 052-08127-15 | COIL A/W 1.5T/2.7MM HOR 0.8MM WIRE |
| C348 | | 015-24100-08 | CAP CER 0805 CHIP 1N 10% X7R 50V | L318 | | 052-56130-85 | COIL A/W 8.5T/3.0MM HOR 0.85MM WIRE |
| C349 | | 015-24100-08 | CAP CER 0805 CHIP 1N 10% X7R 50V | L319 | | 056-00021-01 | IND FXD 1.5UH AXIAL |
| C350 | | 015-03150-06 | CAP CER 1210 CHIP 150P NPO 500V GRM42-2 | L320 | | 052-08160-25 | COIL A/W 2.5T/6.0MM HOR 0.8MM WIRE |
| C351 | | 015-01390-06 | CAP CER 1210 CHIP 3P9 NPO 500V GRM42-2 | L321 | | 056-00021-60 | IND FXD 330NH 6.6X2.7MM AXIAL NON MAGNET |
| C352 | | 015-03150-06 | CAP CER 1210 CHIP 150P NPO 500V GRM42-2 | L322 | | 052-08150-25 | COIL A/W 2.5T/5.0MM HOR 0.8MM WIRE |
| C353 | | 015-24100-08 | CAP CER 0805 CHIP 1N 10% X7R 50V | L323 | | 052-08150-25 | COIL A/W 2.5T/5.0MM HOR 0.8MM WIRE |
| C355 | | 015-06100-08 | CAP CER 1206 CHIP 100N 10% X7R 50V | L324 | | 052-08130-45 | COIL A/W 4.5T/3.0MM HOR 0.8MM WIRE |
| C356 | | 015-06100-08 | CAP CER 1206 CHIP 100N 10% X7R 50V | L325 | | 052-08150-25 | COIL A/W 2.5T/5.0MM HOR 0.8MM WIRE |
| C357 | | 015-24100-08 | CAP CER 0805 CHIP 1N 10% X7R 50V | L330 | | 030-50000-00 | LINK WIRE AI ZERO OHM 0.6MM WIRE |
| C359 | | 020-58100-04 | CAP ELECT AI RDL 10M 16V 4X7MM | L331 | | 057-10005-03 | IND 0805 BLM21B05 EMI SUPRSN 5 OHM AT 10 |
| C360 | | 015-24100-08 | CAP CER 0805 CHIP 1N 10% X7R 50V | L401 | | 050-00016-50 | COIL TAIT NO 650 455KHZ 5.6MM CAN |
| C370 | | 015-02150-03 | CAP CER CHIP 15P 5% 500V HIQ GRH111 2.8M | P1 | | 240-00026-24 | CONN PADLE BRD 16 WAY MICRO MATCH 1-2155 |
| C371 | | 015-02150-03 | CAP CER CHIP 15P 5% 500V HIQ GRH111 2.8M | P2 | | 240-00026-21 | CONN PADLE BRD 12 WAY MICRO MATCH 1-2155 |
| C403 | | 015-23470-08 | CAP CER 0805 CHIP 470P 10% X7R 50V | P3 | | 240-00026-21 | PLUG CAP HOUSING 7-POS CONN 172039-1 |
| C410 | | 020-57470-10 | CAP ELECT AI RDL 4U7 50V LO ESR | P5 | | 240-00010-76 | PLUG HEADER 10WAY MICROMATCH PCB MTD 1- |
| C411 | | 015-06100-08 | CAP CER 1206 CHIP 100N 10% X7R 50V | P6 | | 240-00010-76 | PLUG HEADER 10WAY MICROMATCH PCB MTD 1- |
| C412 | | 020-58470-05 | CAP ELECT AI RDL 47M 16V 6.3X7MM | P7 | | 240-00020-72 | HEADER 2 WAY PCB MTG ULTREX |
| C413 | | 015-06100-08 | CAP CER 1206 CHIP 100N 10% X7R 50V | Q100 | | 000-10003-12 | (S) XSTR SMD BFR31 N JFET SOT-23 |
| C414 | | 020-09470-05 | CAP ELECT RADL 470M 16V 10X12.5MM | Q101 | | 000-10095-10 | (S) XSTR SMD MMBR951 NPN UHF SOT-23 |
| C415 | | 020-19100-02 | CAP ELECT RADL 1000M 16V 12X20MM | Q102 | | 000-10008-57 | (S) XSTR SMD BCW70 PNP SOT23 AF SML SIG |
| C416 | | 015-23470-08 | CAP CER 0805 CHIP 470P 10% X7R 50V | Q103 | | 000-10095-10 | (S) XSTR SMD MMBR951 NPN UHF SOT-23 |
| C419 | | 015-06100-08 | CAP CER 1206 CHIP 100N 10% X7R 50V | Q105 | | 000-10008-92 | (S) XSTR SMD BFS17 NPN SOT-23 UHF SMALL |
| C420 | | 015-06100-08 | CAP CER 1206 CHIP 100N 10% X7R 50V | Q106 | | 000-10008-48 | (S) XSTR SMD BCW60/BC848B215 NPN SOT23 A |
| C423 | | 020-08560-09 | CAP ELECT RADL 56M 50V 6.3X15.5MM L/S | Q107 | | 000-10008-92 | (S) XSTR SMD BFS17 NPN SOT-23 UHF SMALL |
| C424 | | 020-57470-10 | CAP ELECT AI RDL 4U7 50V LO ESR | Q108 | | 000-10008-92 | (S) XSTR SMD BFS17 NPN SOT-23 UHF SMALL |
| C425 | | 020-57470-10 | CAP ELECT AI RDL 4U7 50V LO ESR | Q109 | | 000-10008-57 | (S) XSTR SMD BCW70 PNP SOT23 AF SML SIG |
| C426 | | 015-25100-08 | CAP CER 0805 CHIP 10N 10% X7R 50V | Q110 | | 000-10008-92 | (S) XSTR SMD BFR31 NPN SOT-23 UHF SMALL |
| C427 | | 020-57470-10 | CAP ELECT AI RDL 4U7 50V LO ESR | Q115 | | 000-10008-48 | (S) XSTR SMD BCW60/BC848B215 NPN SOT23 A |
| C428 | | 020-57470-10 | CAP ELECT AI RDL 4U7 50V LO ESR | Q200 | | 000-10008-57 | (S) XSTR SMD BCW70 PNP SOT23 AF SML SIG |
| C429 | | 015-24100-08 | CAP CER 0805 CHIP 1N 10% X7R 50V | Q202 | | 000-10008-48 | (S) XSTR SMD BCW60/BC848B215 NPN SOT23 A |
| C430 | | 020-08560-09 | CAP ELECT RADL 56M 50V 6.3X15.5MM L/S | Q203 | | 000-10008-48 | (S) XSTR SMD BCW60/BC848B215 NPN SOT23 A |
| D1 | | 001-00012-90 | (S) DIODE MR2520L OVERVOLT SUPPRESSOR | Q204 | | 000-10008-48 | (S) XSTR SMD BCW60/BC848B215 NPN SOT23 A |
| D101 | | 001-10006-39 | (S) DIODE SMD VARICAP BB639 SOD323 | Q205 | | 000-10008-57 | (S) XSTR SMD BCW70 PNP SOT23 AF SML SIG |
| D102 | | 001-10006-39 | (S) DIODE SMD VARICAP BB639 SOD323 | Q206 | | 000-10008-48 | (S) XSTR SMD BCW60/BC848B215 NPN SOT23 A |
| D103 | | 001-10006-39 | (S) DIODE SMD VARICAP BB639 SOD323 | Q207 | | 000-10008-57 | (S) XSTR SMD BCW60/BC848B215 NPN SOT23 A |
| D105 | | 001-10000-18 | (S) DIODE SMD BAT18 BANDSWITCH SOT-23 SI | Q208 | | 000-10008-48 | (S) XSTR SMD BCW60/BC848B215 NPN SOT23 A |
| D106 | | 001-10000-18 | (S) DIODE SMD BAT18 BANDSWITCH SOT-23 SI | Q209 | | 000-10008-57 | (S) XSTR SMD BCW70 PNP SOT23 AF SML SIG |
| D107 | | 001-10000-17 | (S) DIODE SMD DUAL BAT-17 SCHOTTKY SML S | Q210 | | 000-10003-12 | (S) XSTR SMD BFR31 N JFET SOT-23 |
| D108 | | 001-10000-17 | (S) DIODE SMD DUAL BAT-17 SCHOTTKY SML S | Q211 | | 000-10008-07 | (S) XSTR SMD BC807 PNP SOT-23 AF LO PWR |
| D110 | | 001-10000-17 | (S) DIODE SMD DUAL BAT-17 SCHOTTKY SML S | Q212 | | 000-10057-10 | (S) XSTR SMD MMBR571 NPN SOT-23 UHF LO P |
| D111 | | 001-10000-17 | (S) DIODE SMD DUAL BAT-17 SCHOTTKY SML S | Q213 | | 000-10008-48 | (S) XSTR SMD BCW60/BC848B215 NPN SOT23 A |
| D140A | | 001-10000-18 | (S) DIODE SMD BAT18 BANDSWITCH SOT-23 SI | Q214 | | 000-10095-10 | (S) XSTR SMD MMBR951 NPN UHF SOT-23 |
| D200 | | 001-10000-99 | (S) DIODE SMD BAV99 DUAL SWITCH SGL INL | Q215 | | 000-10095-10 | (S) XSTR SMD MMBR951 NPN UHF SOT-23 |
| D202 | | 001-10000-70 | (S) DIODE SMD BAV70 DUAL SWITCH SOT-23 C | Q216 | | 000-10095-10 | (S) XSTR SMD MMBR951 NPN UHF SOT-23 |
| D203 | | 001-10006-39 | (S) DIODE SMD VARICAP BB639 SOD323 | Q300 | | 000-00032-47 | (S) XSTR MRF559 NPN XPACK UHF PWR 0.5W |
| D204 | | 001-10006-39 | (S) DIODE SMD VARICAP BB639 SOD323 | Q301 | | 000-10095-10 | (S) XSTR SMD MMBR951 NPN UHF SOT-23 |
| D205 | | 001-10006-39 | (S) DIODE SMD VARICAP BB639 SOD323 | Q302 | | 000-00032-46 | XSTR MRF553 NPN VHF XPACK |
| D206 | | 001-10006-39 | (S) DIODE SMD VARICAP BB639 SOD323 | Q303 | | 000-10008-48 | (S) XSTR SMD BCW60/BC848B215 NPN SOT23 A |
| D208 | | 001-10000-18 | (S) DIODE SMD BAT18 BANDSWITCH SOT-23 SI | Q304 | | 000-00012-15 | (S) XSTR BD234 PNP AF PWR TO126 |
| D209 | | 001-10000-18 | (S) DIODE SMD BAT18 BANDSWITCH SOT-23 SI | Q305 | | 000-00008-10 | (SH) XSTR BLW81 NPN UHF PWR 10W STUD |
| D301 | | 001-00013-45 | (S) DIODE SCHOTTKY 1SS97/2 | Q306 | | 000-00032-90 | (S) XSTR MRF1946A VHF PWR 30W STUD MTG |
| D302 | | 001-50012-05 | (S) DIODE AI 1N4531 SI SMALL SIG | Q307 | | 000-10008-48 | (S) XSTR SMD BCW60/BC848B215 NPN SOT23 A |
| D303 | | 001-00012-50 | (S) DIODE PIN UM9401 UHF PWR SWITCH | Q308 | | 000-10008-07 | (S) XSTR SMD BCW70 PNP SOT-23 AF LO PWR |
| D304 | | 001-00012-50 | (S) DIODE PIN UM9401 UHF PWR SWITCH | Q401 | | 000-10008-57 | (S) XSTR SMD BC807 PNP SOT-23 AF LO PWR |
| D401 | | 001-10000-70 | (S) DIODE SMD BAV70 DUAL SWITCH SOT-23 C | Q402 | | 000-10008-17 | (S) XSTR SMD BCW70 PNP SOT-23 AF SML SIG |
| IC101 | | 002-10033-71 | (S) IC SMD MC3371D-R2 FM IF DETECT RSSI | R100 | | 036-13180-00 | RES M/F 0805 CHIP 180E 5% |
| IC201 | | 002-10451-58 | (S) IC SMD MC145158DW2 FREQ SYNTH SOIC | | | | |
| IC202 | | 002-10330-78 | (S) IC MC33078D-R2 DUAL AMP LO NOISE SO | | | | |
| IC203 | | 002-10120-22 | (S) IC SMD MC12022AD-R2 PRESC 8-P | | | | |
| IC402 | | 002-00013-70 | (S) IC TDA1020 AF PWR AMP 9PIN SIL | | | | |
| IC403 | | 002-00078-08 | (S) IC MC7808ACT 8V REG(LINEAR)1AMP TO- | | | | |

| Ref | Var | IPN | Description | Ref | Var | IPN | Description |
|-------|-----|--------------|-----------------------------------------|-------|-----|--------------|------------------------------------------|
| R101 | | 036-14390-00 | RES M/F 0805 CHIP 3K9 5% | R249 | | 036-13120-00 | RES M/F 0805 CHIP 120E 5% |
| R102 | | 036-13560-00 | RES M/F 0805 CHIP 560E 5% | R250 | | 036-14220-00 | RES M/F 0805 CHIP 2K2 5% |
| R103 | | 036-14220-00 | RES M/F 0805 CHIP 2K2 5% | R251 | | 036-13150-00 | RES M/F 0805 CHIP 150E 5% |
| R104 | | 036-13120-00 | RES M/F 0805 CHIP 120E 5% | R252 | | 036-13560-00 | RES M/F 0805 CHIP 560E 5% |
| R105 | | 036-12180-00 | RES M/F 0805 CHIP 18E 5% | R254 | | 036-12220-00 | RES M/F 0805 CHIP 22E 5% |
| R106 | | 036-16100-00 | RES M/F 0805 CHIP 100K 5% | R255 | | 036-12100-00 | RES M/F 0805 CHIP 10E 5% |
| R107 | | 036-16100-00 | RES M/F 0805 CHIP 100K 5% | R256 | | 036-14150-00 | RES M/F 0805 CHIP 1K5 5% |
| R108 | | 036-16100-00 | RES M/F 0805 CHIP 100K 5% | R257 | | 036-14120-00 | RES M/F 0805 CHIP 1K2 5% |
| R109 | | 036-10000-00 | RES M/F 0805 CHIP ZERO OHM | R258 | | 036-12100-00 | RES M/F 0805 CHIP 10E 5% |
| R110 | | 036-10000-00 | RES M/F 0805 CHIP ZERO OHM | R259 | | 036-13560-00 | RES M/F 0805 CHIP 560E 5% |
| R111 | | 036-16150-00 | RES M/F 0805 CHIP 150K 5% | R260 | | 036-12270-00 | RES M/F 0805 CHIP 27E 5% |
| R112 | | 036-12470-00 | RES M/F 0805 CHIP 47E 5% | R261 | | 036-12100-00 | RES M/F 0805 CHIP 10E 5% |
| R113 | | 036-11470-00 | RES M/F 0805 CHIP 4E7 10% | R262 | | 036-14220-00 | RES M/F 0805 CHIP 2K2 5% |
| R114 | | 036-13820-00 | RES M/F 0805 CHIP 820E 5% | R263 | | 036-12220-00 | RES M/F 0805 CHIP 22E 5% |
| R115 | | 036-15120-00 | RES M/F 0805 CHIP 12K 5% | R264 | | 036-14330-00 | RES M/F 0805 CHIP 3K3 5% |
| R116 | | 036-11470-00 | RES M/F 0805 CHIP 4E7 10% | R265 | | 036-14390-00 | RES M/F 0805 CHIP 3K9 5% |
| R117 | | 036-12100-00 | RES M/F 0805 CHIP 10E 5% | R269 | | 036-12100-00 | RES M/F 0805 CHIP 10E 5% |
| R118 | | 036-13100-00 | RES M/F 0805 CHIP 100E 5% | R270 | | 036-12330-00 | RES M/F 0805 CHIP 33E 5% |
| R119 | | 036-12100-00 | RES M/F 0805 CHIP 10E 5% | R271 | | 036-12220-00 | RES M/F 0805 CHIP 22E 5% |
| R120 | | 036-13820-00 | RES M/F 0805 CHIP 820E 5% | R272 | | 036-13150-00 | RES M/F 0805 CHIP 150E 5% |
| R121 | | 036-13180-00 | RES M/F 0805 CHIP 180E 5% | R273 | | 036-12100-00 | RES M/F 0805 CHIP 10E 5% |
| R131 | | 036-13100-00 | RES M/F 0805 CHIP 100E 5% | R274 | | 036-14390-00 | RES M/F 0805 CHIP 3K9 5% |
| R132 | | 036-14220-00 | RES M/F 0805 CHIP 2K2 5% | R275 | | 036-12330-00 | RES M/F 0805 CHIP 33E 5% |
| R133 | | 036-13270-00 | RES M/F 0805 CHIP 270E 5% | R276 | | 036-13220-00 | RES M/F 0805 CHIP 220E 5% |
| R135 | | 036-15100-00 | RES M/F 0805 CHIP 10K 5% | R277 | | 036-14120-00 | RES M/F 0805 CHIP 1K2 5% |
| R138 | | 036-16100-00 | RES M/F 0805 CHIP 100K 5% | R278 | | 036-16100-00 | RES M/F 0805 CHIP 100K 5% |
| R140 | | 036-15680-00 | RES M/F 0805 CHIP 68K 5% | R279 | | 030-53100-20 | RES FILM AI 100E 5% 0.4W 4X1.6MM |
| R140A | | 036-15330-00 | RES M/F 0805 CHIP 33K 5% | R280 | | 036-12220-00 | RES M/F 0805 CHIP 22E 5% |
| R141 | | 036-14150-00 | RES M/F 0805 CHIP 1K5 5% | R281 | | 036-12330-00 | RES M/F 0805 CHIP 33E 5% |
| R142 | | 036-15270-00 | RES M/F 0805 CHIP 27K 5% | R282 | | 036-13120-00 | RES M/F 0805 CHIP 120E 5% |
| R142A | | 036-16100-00 | RES M/F 0805 CHIP 100K 5% | R283 | | 036-12220-00 | RES M/F 0805 CHIP 22E 5% |
| R143 | | 036-15330-00 | RES M/F 0805 CHIP 33K 5% | R284 | | 036-15100-00 | RES M/F 0805 CHIP 10K 5% |
| R143A | | 036-15330-00 | RES M/F 0805 CHIP 33K 5% | R285 | | 036-15560-00 | RES M/F 0805 CHIP 56K 5% |
| #R144 | | 036-15680-00 | RES M/F 0805 CHIP 68K 5% | R286 | | 036-16220-00 | RES M/F 0805 CHIP 220K 5% |
| R144A | | 036-16120-00 | RES M/F 0805 CHIP 120K 5% | R287 | | 036-15560-00 | RES M/F 0805 CHIP 56K 5% |
| R145 | | 036-14150-00 | RES M/F 0805 CHIP 1K5 5% | R288 | | 036-15390-00 | RES M/F 0805 CHIP 39K 5% |
| R145A | | 036-15330-00 | RES M/F 0805 CHIP 33K 5% | R300 | | 036-14100-00 | RES M/F 0805 CHIP 1K 5% |
| R146 | | 036-12220-00 | RES M/F 0805 CHIP 22E 5% | R301 | | 036-13220-00 | RES M/F 0805 CHIP 220E 5% |
| R147 | | 036-13220-00 | RES M/F 0805 CHIP 220E 5% | R302 | | 036-14100-00 | RES M/F 0805 CHIP 1K 5% |
| R148 | | 036-14100-00 | RES M/F 0805 CHIP 1K 5% | R303 | | 036-13330-00 | RES M/F 0805 CHIP 330E 5% |
| R149 | | 036-16100-00 | RES M/F 0805 CHIP 100K 5% | R304 | | 036-12680-00 | RES M/F 0805 CHIP 68E 5% |
| R150 | | 036-16100-00 | RES M/F 0805 CHIP 100K 5% | R305 | | 036-12100-00 | RES M/F 0805 CHIP 10E 5% |
| R151 | | 036-14330-00 | RES M/F 0805 CHIP 3K3 5% | R306 | | 036-12100-00 | RES M/F 0805 CHIP 10E 5% |
| R152 | | 036-16390-00 | RES M/F 0805 CHIP 390K 5% | R307 | | 030-54120-20 | RES FILM AI 1K2 5% 0.4W 4X1.6MM |
| R153 | | 036-14100-00 | RES M/F 0805 CHIP 1K 5% | R308 | | 036-14100-00 | RES M/F 0805 CHIP 1K 5% |
| RV153 | | 042-05470-07 | RES PRESET 47K CARBON 6MM FLAT DUAL ADJ | R309 | | 030-52560-20 | RES FILM AI 56E 5% 0.4W 4X1.6MM |
| R154 | | 036-15100-00 | RES M/F 0805 CHIP 10K 5% | R310 | | 036-13100-00 | RES M/F 0805 CHIP 100E 5% |
| R155 | | 036-16100-00 | RES M/F 0805 CHIP 100K 5% | R311 | | 036-13390-00 | RES M/F 0805 CHIP 390E 5% |
| R156 | | 036-13100-00 | RES M/F 0805 CHIP 100E 5% | R312 | | 036-13330-00 | RES M/F 0805 CHIP 330E 5% |
| R157 | | 036-15100-00 | RES M/F 0805 CHIP 10K 5% | R313 | | 036-13100-00 | RES M/F 0805 CHIP 100E 5% |
| R158 | | 036-14100-00 | RES M/F 0805 CHIP 1K 5% | R314 | | 036-12100-00 | RES M/F 0805 CHIP 10E 5% |
| R159 | | 036-12470-00 | RES M/F 0805 CHIP 47E 5% | R315 | | 030-52100-20 | RES FILM AI 10E 5% 0.4W 4X1.6MM |
| R160 | | 036-12100-00 | RES M/F 0805 CHIP 10E 5% | R316 | | 032-32120-02 | RES M/F PWR 12E 5% 1W 8X2.5MM 12MML/S PR |
| R161 | | 036-14100-00 | RES M/F 0805 CHIP 1K 5% | R317 | | 036-12100-00 | RES M/F 0805 CHIP 10E 5% |
| R194 | | 036-10000-00 | RES M/F 0805 CHIP ZERO OHM | R318 | | 030-52100-20 | RES FILM AI 10E 5% 0.4W 4X1.6MM |
| R195 | | 036-15680-00 | RES M/F 0805 CHIP 68K 5% | R318A | | 030-52100-20 | RES FILM AI 10E 5% 0.4W 4X1.6MM |
| R196 | | 036-13100-00 | RES M/F 0805 CHIP 100E 5% | R319 | | 030-03100-00 | RES FILM 100E 5% 0.25W 7X2.5MM |
| R197 | | 036-13100-00 | RES M/F 0805 CHIP 100E 5% | R320 | | 030-55150-20 | RES FILM AI 15K 5% 0.4W 4X1.6MM |
| R198 | | 036-14220-00 | RES M/F 0805 CHIP 2K2 5% | R321 | | 030-52220-20 | RES FILM AI 22E 5% 0.4W 4X1.6MM |
| R199 | | 036-13100-00 | RES M/F 0805 CHIP 100E 5% | R323 | | 036-13330-00 | RES M/F 0805 CHIP 330E 5% |
| R200 | | 036-16180-00 | RES M/F 0805 CHIP 180K 5% | R324 | | 030-52470-20 | RES FILM AI 47E 5% 0.4W 4X1.6MM |
| R201 | | 036-14180-00 | RES M/F 0805 CHIP 1K8 5% | RV324 | | 042-06470-06 | RES PRESET 470/500K 25% 6MM ROUND TOP A |
| R202 | | 036-14220-00 | RES M/F 0805 CHIP 2K2 5% | R326 | | 036-16220-00 | RES M/F 0805 CHIP 220K 5% |
| R213 | | 036-14120-00 | RES M/F 0805 CHIP 1K2 5% | R327 | | 036-14100-00 | RES M/F 0805 CHIP 1K 5% |
| R214 | | 036-13680-00 | RES M/F 0805 CHIP 680E 5% | R328 | | 030-53150-20 | RES FILM AI 150E 5% 0.4W 4X1.6MM |
| R217 | | 036-12470-00 | RES M/F 0805 CHIP 47E 5% | R329 | | 036-15470-00 | RES M/F 0805 CHIP 47K 5% |
| R218 | | 036-15120-00 | RES M/F 0805 CHIP 12K 5% | R330 | | 036-16220-00 | RES M/F 0805 CHIP 220K 5% |
| R219 | | 036-13270-00 | RES M/F 0805 CHIP 270E 5% | R332 | | 036-13100-00 | RES M/F 0805 CHIP 100E 5% |
| R220 | | 036-14680-00 | RES M/F 0805 CHIP 6K8 5% | R333 | | 036-14220-00 | RES M/F 0805 CHIP 2K2 5% |
| R221 | | 036-13330-00 | RES M/F 0805 CHIP 330E 5% | R334 | | 036-16270-00 | RES M/F 0805 CHIP 270K 5% |
| R222 | | 036-12470-00 | RES M/F 0805 CHIP 47E 5% | R335 | | 036-14180-00 | RES M/F 0805 CHIP 1K8 5% |
| RV222 | | 042-05470-07 | RES PRESET 47K CARBON 6MM FLAT DUAL ADJ | R336 | | 036-13220-00 | RES M/F 0805 CHIP 220E 5% |
| R223 | | 036-15220-00 | RES M/F 0805 CHIP 22K 5% | R337 | | 036-10000-00 | RES M/F 0805 CHIP ZERO OHM |
| R224 | | 036-14820-00 | RES M/F 0805 CHIP 8K2 5% | R338 | | 036-15100-00 | RES M/F 0805 CHIP 10K 5% |
| R225 | | 036-15220-00 | RES M/F 0805 CHIP 22K 5% | R339 | | 036-15560-00 | RES M/F 0805 CHIP 56K 5% |
| R226 | | 036-14470-00 | RES M/F 0805 CHIP 4K7 5% | R340 | | 036-16220-00 | RES M/F 0805 CHIP 220K 5% |
| R227 | | 036-14120-00 | RES M/F 0805 CHIP 1K2 5% | R341 | | 036-13330-00 | RES M/F 0805 CHIP 330E 5% |
| R228 | | 036-14330-00 | RES M/F 0805 CHIP 3K3 5% | R342 | | 036-13680-00 | RES M/F 0805 CHIP 680E 5% |
| R229 | | 036-12220-00 | RES M/F 0805 CHIP 22E 5% | R350 | | 036-12100-00 | RES M/F 0805 CHIP 10E 5% |
| R230 | | 036-13390-00 | RES M/F 0805 CHIP 390E 5% | R418 | | 036-13680-00 | RES M/F 0805 CHIP 680E 5% |
| R231 | | 036-13180-00 | RES M/F 0805 CHIP 180E 5% | R420 | | 036-15470-00 | RES M/F 0805 CHIP 47K 5% |
| R232 | | 036-14220-00 | RES M/F 0805 CHIP 2K2 5% | R420A | | 036-14470-00 | RES M/F 0805 CHIP 4K7 5% |
| R233 | | 036-13680-00 | RES M/F 0805 CHIP 680E 5% | R421 | | 036-15470-00 | RES M/F 0805 CHIP 47K 5% |
| R234 | | 036-13180-00 | RES M/F 0805 CHIP 180E 5% | R421A | | 036-14470-00 | RES M/F 0805 CHIP 4K7 5% |
| R235 | | 036-13330-00 | RES M/F 0805 CHIP 330E 5% | R422 | | 036-12220-00 | RES M/F 0805 CHIP 22E 5% |
| R236 | | 036-12470-00 | RES M/F 0805 CHIP 47E 5% | R425 | | 036-14100-00 | RES M/F 0805 CHIP 1K 5% |
| R237 | | 036-13100-00 | RES M/F 0805 CHIP 100E 5% | R426 | | 036-11470-00 | RES M/F 0805 CHIP 4E7 10% |
| R238 | | 036-14820-00 | RES M/F 0805 CHIP 8K2 5% | R427 | | 036-11470-00 | RES M/F 0805 CHIP 4E7 10% |
| R239 | | 036-15220-00 | RES M/F 0805 CHIP 22K 5% | R428 | | 036-12220-00 | RES M/F 0805 CHIP 22E 5% |
| R240 | | 036-16100-00 | RES M/F 0805 CHIP 100K 5% | R429 | | 036-15270-00 | RES M/F 0805 CHIP 27K 5% |
| R241 | | 036-14120-00 | RES M/F 0805 CHIP 1K2 5% | R430 | | 036-14680-00 | RES M/F 0805 CHIP 6K8 5% |
| R242 | | 036-12220-00 | RES M/F 0805 CHIP 22E 5% | R431 | | 036-15680-00 | RES M/F 0805 CHIP 68K 5% |
| R243 | | 036-14220-00 | RES M/F 0805 CHIP 2K2 5% | R432 | | 036-12100-00 | RES M/F 0805 CHIP 10E 5% |
| R244 | | 036-12220-00 | RES M/F 0805 CHIP 22E 5% | R433 | | 036-13100-00 | RES M/F 0805 CHIP 100E 5% |
| R245 | | 036-12220-00 | RES M/F 0805 CHIP 22E 5% | R434 | | 036-12470-00 | RES M/F 0805 CHIP 47E 5% |
| R246 | | 036-13470-00 | RES M/F 0805 CHIP 470E 5% | R437 | | 036-14100-00 | RES M/F 0805 CHIP 1K 5% |
| R247 | | 036-12470-00 | RES M/F 0805 CHIP 47E 5% | R500 | | 030-03120-00 | RES FILM 120E 5% 0.25W 7X2.5MM |
| R248 | | 036-10000-00 | RES M/F 0805 CHIP ZERO OHM | | | | |

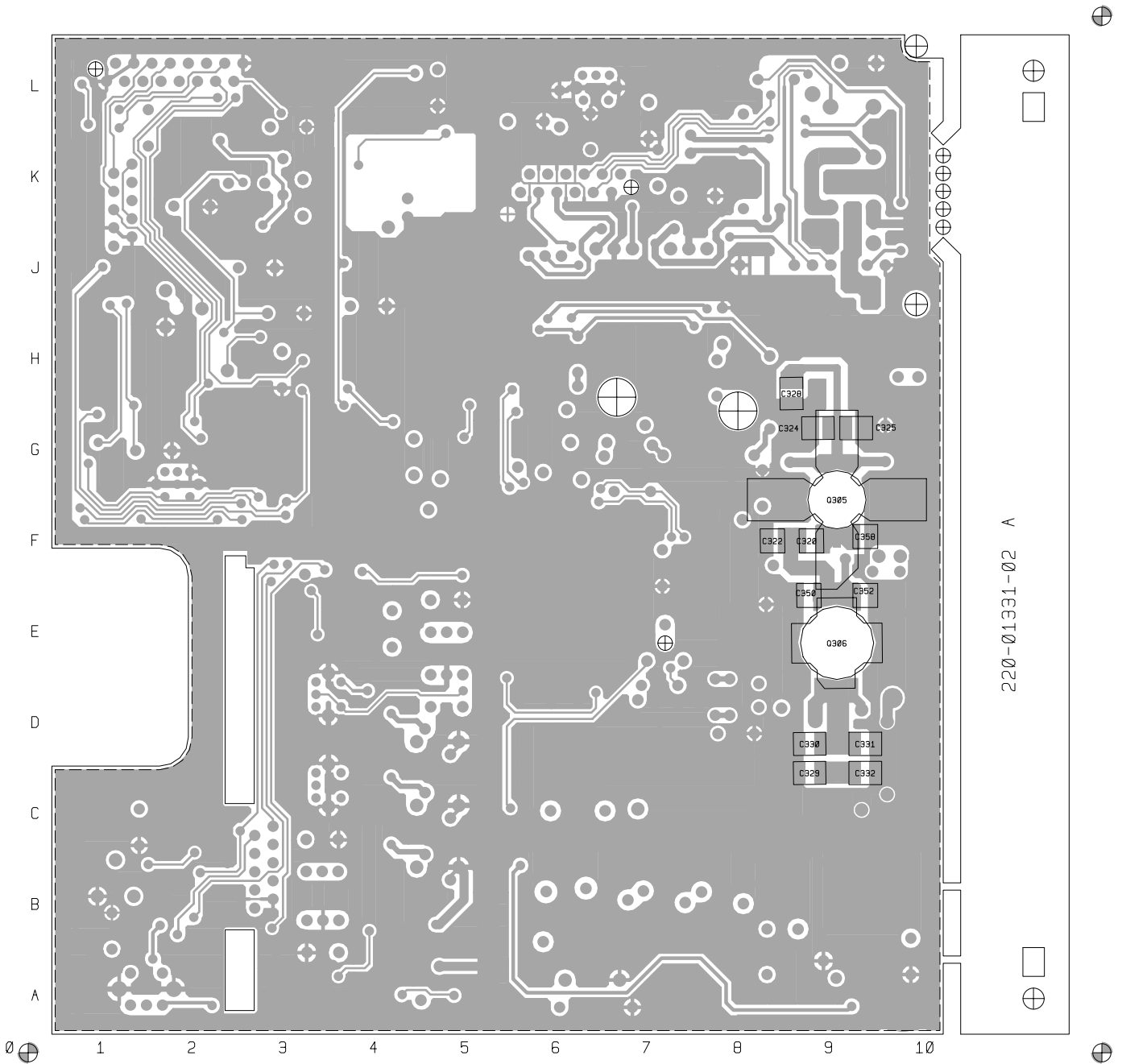
T2000-100 Mechanical & Miscellaneous Parts

| IPN | Description | IPN | Description |
|--------------|---------------------------------------------------------|-----|-------------|
| 065-00010-08 | BEAD FERRITE 4S3 3*0.7*10MM RED FOR L330, L313, L308 | | |
| 065-00010-11 | BEAD FERRITE 4S3 3*1*4MM RED FOR L1, L309, L309A | | |
| 205-00010-12 | CABLE FLAT RBBN 16 CORE 16/7/0.1 GREY | | |
| 220-01331-02 | PCB T2100 RF 220-270MHZ | | |
| 240-00020-54 | PLUG 16 WAY 2X8 FLAT CABLE TERMN MICROMATCH | | |
| 240-02100-11 | SKT COAX BNC 3.5MM PNL NO EARTH TAG | | |
| 303-23135-01 | COVER BTTM A1M2505 T2000 PNTD CMPLT | | |
| 303-50070-00 | CLIP A4M2648 XSTR MTG T2000PA/T555'S | | |
| 303-50076-00 | CLIP A4M2524 HSINK T2000 RF PRE-DRIVER TO-39 | | |
| 303-50077-00 | CLIP A3M2525 T2000 AUDIO IC AND REG | | |
| 308-13103-01 | CHASSIS A1M2503 D-CAST T2000 PNTD CMPLT | | |
| 316-85094-00 | PLATE A4M2160 BNC MTG UK 5X5 SERIES | | |
| 319-01164-01 | SHIELD A1M2507 DIE CAST T2000 MICROP | | |
| 319-01167-00 | SHIELD RX A3M2594 T2000 | | |
| 349-00020-30 | SCREW TAPTITE M3X6MM PAN POZI BZ | | |
| 349-00020-31 | SCREW TAPTITE M3X10MM PAN POZI BZ | | |
| 349-00020-32 | SCREW TAPTITE M3X8MM PAN POZI BZ | | |
| 349-00020-34 | SCREW M3*12 PAN POZI TAPTITE BZ | | |
| 349-00020-48 | SCREW M4X25MM PAN POZI TAPTITE II BRIGHT ZINC | | |
| 349-00020-49 | SCREW TAPTITE M4X35MM PAN POZI BZ | | |
| 352-00010-35 | NUT 8-32 UNC HEX RF PWR XSTR MTG NUT FOR Q306 | | |
| 360-01053-01 | PLUG A3M2563 PLASTIC D-RANGE BLANKING | | |
| 362-01027-01 | GASKET A4M2564 RUBBER SEAL T2000 MAIN CONN | | |
| 362-01028-00 | GASKET A4M2652 130X3MM CONDUCT STRIPS T2000 | | |
| 362-01058-00 | GASKET TO-126 11.1X7.9 D2.4 SIL INSULATION | | |

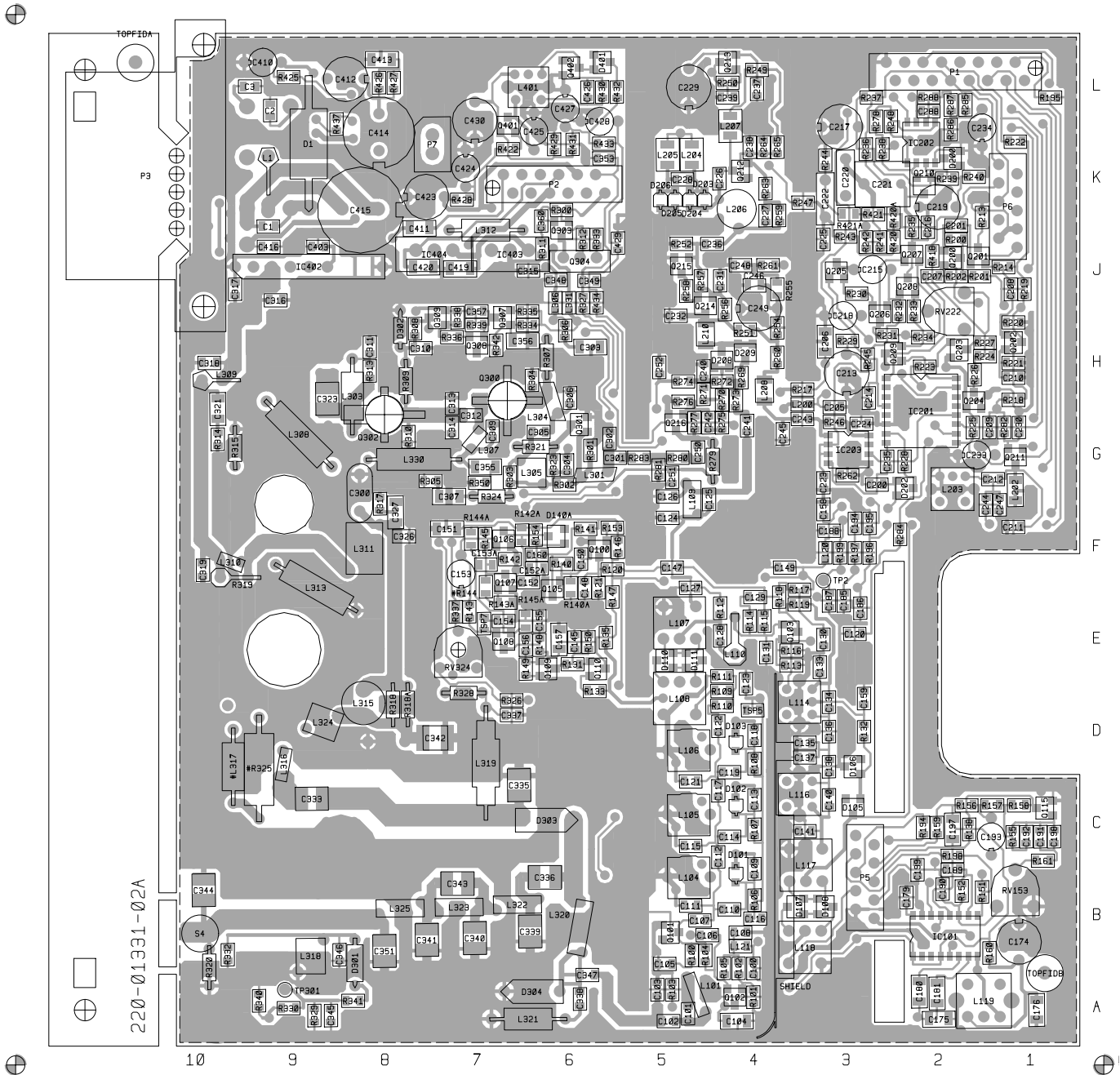
T2000-100 Grid Reference Index (IPN 220-01331-02)

| Device | PCB | Circuit | Device | PCB | Circuit | Device | PCB | Circuit | Device | PCB | Circuit |
|--------|-------|---------|--------|-------|---------|--------|-------|---------|--------|-------|---------|
| C1 | 1:J9 | 1-V9 | C205 | 1:G3 | 1-A2 | C334 | | 1-M0 | IC202 | 1:K2 | |
| C2 | 1:L9 | 1-U8 | C206 | 1:H3 | | C334A | | 1-N0 | | | 1-G4 |
| C3 | 1:L10 | 1-V8 | C207 | 1:J2 | 1-B6 | C335 | | 1-R0 | | | 1-J4 |
| C100 | 1:A4 | 1-T3 | C208 | 1:J1 | 1-C7 | C336 | 1:B6 | 1-S1 | IC203 | 1:G3 | 1-D2 |
| C101 | 1:A5 | 1-T2 | C209 | 1:G1 | 1-C7 | C337 | 1:D7 | 1-S1 | IC402 | 1:J9 | 1-S8 |
| C102 | 1:A5 | 1-S2 | C210 | 1:H1 | 1-E7 | C338 | 1:A6 | 1-S0 | IC403 | 1:J7 | 1-L9 |
| C103 | 1:A5 | 1-S2 | C211 | 1:F1 | 1-E7 | C339 | 1:B6 | 1-S0 | IC404 | 1:J8 | 1-L8 |
| C104 | 1:A4 | 1-S3 | C212 | 1:G1 | 1-F7 | C340 | 1:B7 | 1-T0 | | | |
| C105 | 1:A5 | 1-R3 | C213 | 1:H3 | 1-D4 | C341 | 1:B8 | 1-T0 | L1 | 1:K9 | 1-U9 |
| C106 | 1:B5 | 1-R3 | C214 | 1:H3 | 1-C4 | C342 | 1:D7 | 1-O1 | L101 | 1:A5 | 1-S2 |
| C107 | 1:B5 | 1-Q3 | C215 | 1:J3 | 1-E4 | C343 | 1:B7 | 1-T0 | L104 | 1:B5 | 1-P2 |
| C108 | 1:B4 | 1-T3 | C216 | 1:J2 | 1-E5 | C344 | 1:B10 | 1-V0 | L105 | 1:C5 | 1-O2 |
| C109 | 1:B4 | 1-Q3 | C217 | 1:K3 | 1-F4 | C345 | 1:A9 | 1-S1 | L106 | 1:D5 | 1-N2 |
| C110 | 1:B4 | 1-P3 | C218 | 1:H3 | 1-F5 | C346 | 1:B9 | 1-T1 | L107 | 1:E5 | 1-J3 |
| C111 | 1:B5 | 1-P3 | C219 | 1:K2 | 1-G4 | C347 | 1:A6 | 1-S2 | L108 | 1:D5 | 1-L3 |
| C112 | 1:C4 | 1-P3 | C220 | 1:K3 | 1-G5 | C348 | 1:J6 | 1-U2 | L109 | 1:F5 | 1-G3 |
| C113 | 1:C4 | 1-O3 | C221 | 1:K2 | 1-G5 | C349 | 1:J6 | 1-V2 | L110 | 1:E4 | 1-L5 |
| C114 | 1:C4 | 1-O3 | C222 | 1:K3 | 1-H3 | C350 | 2:E9 | 1-N0 | L114 | 1:D4 | 1-O5 |
| C115 | 1:C5 | 1-O3 | C223 | 1:G3 | 1-C2 | C351 | 1:B8 | 1-T0 | L116 | 1:C4 | 1-Q5 |
| C116 | 1:B4 | 1-Q3 | C224 | 1:G3 | 1-D2 | C352 | 2:E9 | 1-O0 | L117 | 1:B3 | 1-R5 |
| C117 | 1:C4 | 1-N3 | C225 | 1:J3 | 1-H3 | C353 | 1:K6 | 1-V2 | L118 | 1:B3 | 1-T5 |
| C118 | 1:D4 | 1-N3 | C226 | 1:K4 | 1-B1 | C355 | 1:G7 | 1-I1 | L119 | 1:A2 | 1-K8 |
| C119 | 1:C4 | 1-N3 | C227 | 1:K4 | 1-B0 | #C355 | | 1-P1 | L120 | 1:F3 | 1-K4 |
| C120 | 1:E3 | 1-J3 | C228 | 1:K5 | 1-A0 | C356 | 1:H7 | 1-Q1 | L121 | 1:B4 | 1-T3 |
| C121 | 1:C5 | 1-M2 | C229 | 1:L5 | 1-B1 | C357 | 1:H7 | 1-Q2 | L200 | 1:G4 | 1-A2 |
| C122 | 1:D4 | 1-M3 | C230 | 1:G1 | 1-E7 | C358 | 2:F9 | 1-N0 | L202 | 1:G1 | 1-E7 |
| C123 | 1:D4 | 1-M3 | C231 | 1:J4 | 1-D0 | C359 | | 1-P1 | L203 | 1:G2 | 1-G7 |
| C124 | 1:F5 | 1-H2 | C232 | 1:H5 | 1-E1 | C360 | 1:J6 | 1-J1 | L204 | 1:K5 | 1-A0 |
| C125 | 1:F5 | 1-G2 | C233 | 1:G2 | 1-D7 | C370 | | 1-P0 | L205 | 1:K5 | 1-A0 |
| C126 | 1:F5 | 1-G2 | C234 | 1:K2 | 1-I3 | C371 | | 1-Q0 | L206 | 1:K4 | 1-B0 |
| C127 | 1:E5 | 1-K5 | C235 | 1:G3 | 1-B3 | C403 | 1:J9 | 1-S7 | L207 | 1:K4 | 1-C1 |
| C128 | 1:E4 | 1-L5 | C236 | 1:J4 | 1-B0 | C410 | 1:L9 | 1-S9 | L208 | 1:H4 | 1-E2 |
| C129 | 1:E4 | 1-M5 | C237 | 1:L4 | 1-B1 | C411 | 1:J8 | 1-T8 | L210 | 1:H5 | 1-E1 |
| C130 | 1:E3 | 1-M6 | C238 | 1:K4 | 1-C0 | C412 | 1:L8 | 1-T9 | L301 | 1:G6 | 1-H0 |
| C131 | 1:E4 | 1-M5 | C239 | 1:L4 | 1-B2 | C413 | 1:L8 | 1-U8 | L303 | 1:G8 | 1-K1 |
| C133 | 1:E3 | 1-O5 | C240 | 1:H5 | 1-F1 | C414 | 1:K8 | 1-U9 | L304 | 1:H6 | 1-I0 |
| C134 | 1:D3 | 1-O6 | C241 | 1:G4 | 1-F2 | C415 | 1:K8 | 1-U9 | L305 | 1:G7 | 1-I0 |
| C135 | 1:D3 | 1-P5 | C242 | 1:G5 | 1-F0 | C416 | 1:J9 | 1-U8 | L306 | 1:J6 | 1-K1 |
| C136 | 1:D3 | 1-P5 | C243 | 1:G4 | 1-E2 | C419 | 1:J7 | 1-K8 | L307 | 1:G7 | 1-J0 |
| C137 | 1:D3 | 1-P5 | C244 | 1:F2 | 1-G7 | C420 | 1:J8 | 1-L8 | L308 | 1:H9 | 1-M0 |
| C138 | 1:D3 | 1-P5 | C245 | 1:G4 | 1-E2 | C423 | 1:K8 | 1-M9 | L309 | 1:H10 | 1-N1 |
| C140 | 1:C3 | 1-Q6 | C246 | 1:J4 | 1-D2 | C424 | 1:K7 | 1-M9 | L310 | 1:F10 | 1-N1 |
| C141 | 1:C3 | 1-Q5 | C247 | 1:F1 | 1-F7 | C425 | 1:K6 | 1-O8 | L311 | 1:F8 | 1-N1 |
| C145 | 1:E6 | 1-T4 | C248 | 1:J4 | 1-C2 | C426 | 1:L6 | 1-P9 | L312 | 1:J7 | 1-L2 |
| C147 | 1:F5 | 1-O5 | C249 | 1:J4 | 1-C2 | C427 | 1:L6 | 1-Q8 | L313 | 1:E8 | 1-P0 |
| C148 | 1:E6 | 1-O4 | C250 | 1:G5 | 1-G0 | C428 | 1:L6 | 1-R8 | L315 | 1:D8 | 1-O1 |
| C149 | 1:F4 | 1-L4 | C251 | 1:G5 | 1-G1 | C429 | 1:J6 | 1-R8 | L316 | 1:C9 | 1-Q1 |
| C150 | 1:F6 | 1-P4 | C252 | 1:H5 | 1-I1 | C430 | 1:L7 | 1-N9 | #L317 | 1:C10 | 1-P1 |
| C151 | 1:F7 | 1-O5 | C288 | 1:L2 | 1-J4 | D1 | 1:K9 | 1-V9 | L318 | 1:B9 | 1-T1 |
| C152 | 1:F6 | 1-Q4 | C300 | 1:G8 | 1-O1 | D101 | 1:B4 | 1-P3 | L319 | 1:C7 | 1-R1 |
| C152A | 1:F6 | 1-P4 | C301 | 1:G6 | 1-G0 | D102 | 1:C4 | 1-O3 | L320 | 1:B6 | 1-S0 |
| C153 | 1:F7 | 1-R4 | C302 | 1:G6 | 1-G0 | D103 | 1:D4 | 1-N3 | L321 | 1:A7 | 1-S0 |
| C153A | 1:F7 | 1-R4 | C303 | 1:H6 | 1-L1 | D105 | 1:C3 | 1-T6 | L322 | 1:B7 | 1-S1 |
| C154 | 1:E7 | 1-S4 | C304 | 1:G6 | 1-G0 | D106 | 1:D3 | 1-T5 | L323 | 1:B7 | 1-T1 |
| C155 | 1:E6 | 1-T4 | C305 | 1:G6 | 1-I0 | D107 | 1:B4 | 1-S6 | L324 | 1:D9 | 1-P1 |
| C156 | 1:E7 | 1-T4 | C306 | 1:H6 | 1-I0 | | | 1-S5 | L325 | 1:B8 | 1-T1 |
| C157 | 1:E6 | 1-U5 | C307 | 1:F7 | 1-I1 | D108 | 1:B3 | 1-S5 | L330 | 1:G8 | 1-J1 |
| C158 | 1:F3 | 1-K4 | C309 | 1:G7 | 1-J0 | | | 1-S5 | L331 | 1:J6 | 1-T2 |
| C159 | 1:D3 | 1-U5 | C310 | 1:H8 | 1-K0 | D110 | 1:E5 | 1-K3 | L401 | 1:L6 | 1-O9 |
| C160 | 1:F6 | 1-Q4 | C311 | 1:H8 | 1-L1 | | | 1-K3 | | | |
| C174 | 1:B1 | 1-J8 | C312 | 1:G7 | 1-J0 | D111 | 1:E5 | 1-K3 | P1 | 1:L1 | 1-A4 |
| C175 | 1:A2 | 1-K8 | C313 | 1:G7 | 1-J0 | | | 1-K2 | | | 1-A5 |
| C176 | 1:A1 | 1-K8 | C314 | 1:G7 | 1-J0 | D140A | 1:F6 | 1-Q4 | | | 1-A5 |
| C179 | 1:B2 | | C315 | 1:J6 | 1-K1 | D200 | 1:K2 | | | | 1-A5 |
| C180 | 1:A2 | 1-L8 | C316 | 1:J9 | 1-O2 | D202 | 1:G2 | 1-C5 | | | 1-A6 |
| C181 | 1:A2 | 1-L8 | C317 | 1:J10 | 1-O2 | D203 | 1:K5 | 1-A0 | | | 1-A5 |
| C185 | 1:E3 | 1-I6 | C318 | 1:H10 | 1-L2 | D204 | 1:K5 | 1-A0 | | | 1-A4 |
| C186 | 1:E3 | 1-J6 | C319 | 1:F10 | 1-M1 | D205 | 1:K5 | 1-A0 | | | 1-A6 |
| C187 | 1:E3 | 1-O8 | C320 | 2:F9 | 1-N0 | D206 | 1:K5 | 1-A0 | | | 1-A4 |
| C188 | 1:F3 | 1-A6 | C321 | 1:G10 | 1-M1 | D208 | 1:H4 | 1-E1 | | | 1-A7 |
| C189 | 1:B2 | 1-K6 | C322 | 2:F8 | 1-N0 | D209 | 1:H4 | 1-E1 | | | 1-A6 |
| C190 | 1:B2 | 1-K7 | C323 | 1:H9 | 1-K0 | D301 | 1:A8 | 1-U1 | | | 1-A4 |
| C191 | 1:C1 | 1-M6 | C324 | 2:G9 | 1-L0 | D302 | 1:H8 | 1-J0 | | | 1-A5 |
| C192 | 1:C1 | 1-M7 | C325 | 2:G9 | 1-L0 | D303 | 1:C7 | 1-R1 | | | 1-A6 |
| C193 | 1:C1 | 1-N7 | C326 | 1:F8 | 1-N1 | D304 | 1:A6 | 1-S0 | | | 1-A5 |
| C194 | 1:F3 | 1-A8 | C327 | 1:F8 | 1-N1 | D401 | 1:L6 | 1-Q9 | | | 1-A6 |
| C195 | 1:F3 | 1-A7 | C328 | 2:H9 | 1-L0 | | | 1-Q9 | P2 | 1:K7 | 1-W2 |
| C197 | 1:C2 | 1-O7 | C329 | 2:C9 | 1-R0 | | | | | | 1-W3 |
| C198 | 1:C1 | 1-M6 | C330 | 2:D9 | 1-Q0 | IC101 | 1:B2 | 1-K6 | | | 1-W3 |
| C199 | 1:B2 | 1-M7 | C331 | 2:D9 | 1-Q0 | | | 1-L7 | | | 1-W3 |
| C200 | 1:G3 | 1-B5 | C332 | 2:C9 | 1-Q0 | | | 1-O7 | | | 1-W2 |
| C201 | 1:J2 | 1-C7 | C333 | 1:C9 | 1-R1 | IC201 | 1:G2 | 1-B4 | | | 1-W2 |

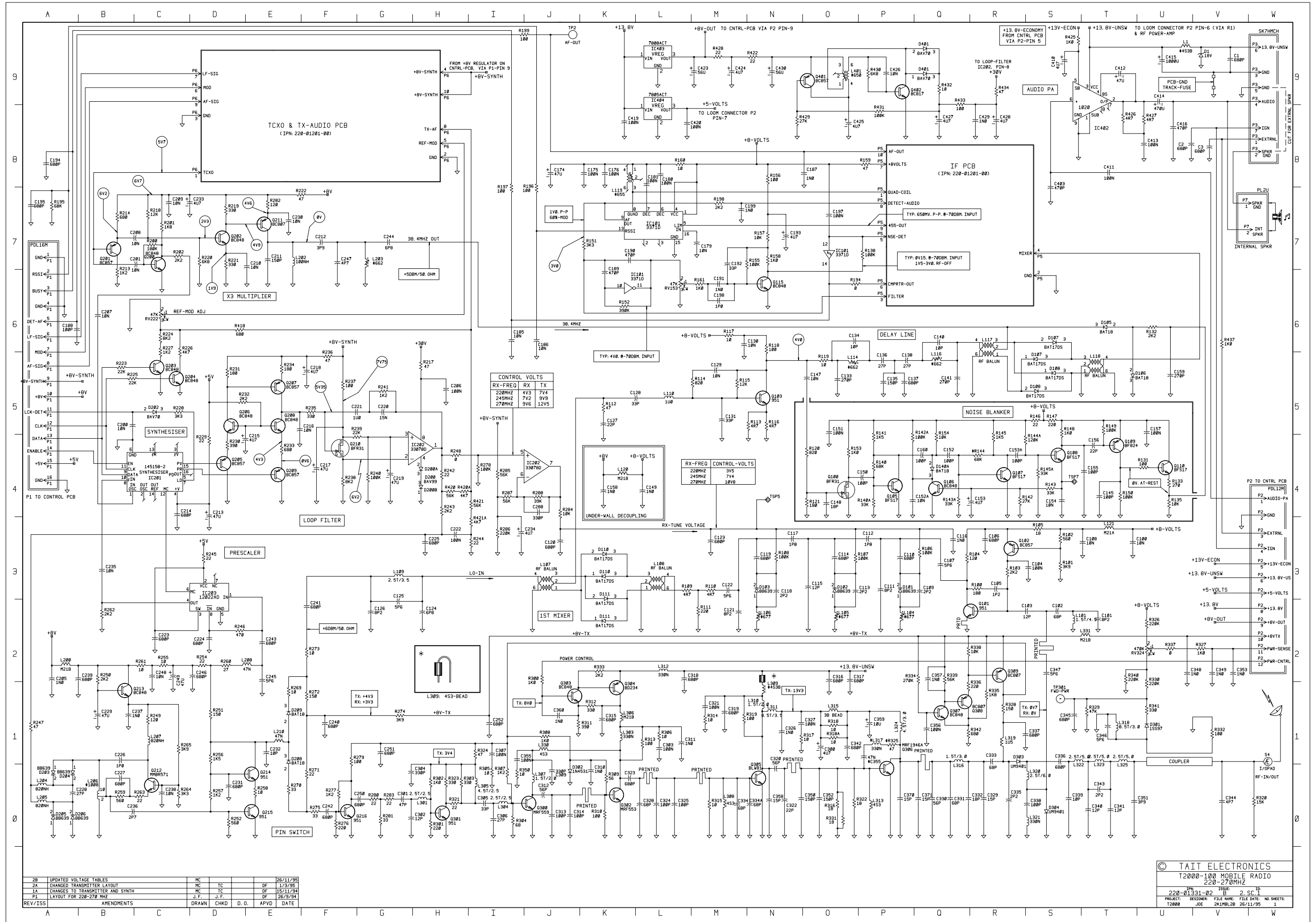
| Device | PCB | Circuit | Device | PCB | Circuit | Device | PCB | Circuit | Device | PCB | Circuit |
|--------|-------|---------|--------|------|---------|--------|-------|---------|--------|-------|---------|
| | | 1-W4 | R110 | 1:D4 | 1-M3 | R246 | 1:G3 | 1-D2 | R420 | 1:J3 | 1-H4 |
| | | 1-W3 | R111 | 1:E4 | 1-M2 | R247 | 1:K4 | 1-A1 | R420A | 1:J3 | 1-H4 |
| | | 1-W4 | R112 | 1:E4 | 1-K5 | R248 | 1:L3 | 1-H4 | R421 | 1:K3 | 1-I4 |
| | | 1-W3 | R113 | 1:E4 | 1-N5 | R249 | 1:L4 | 1-C1 | R421A | 1:K3 | 1-I3 |
| | | 1-W2 | R114 | 1:E4 | 1-M5 | R250 | 1:L4 | 1-B2 | R422 | 1:K7 | 1-N9 |
| | | 1-W2 | R115 | 1:E4 | 1-M5 | R251 | 1:H4 | 1-D1 | R425 | 1:L9 | 1-S9 |
| P3 | 1:L10 | 1-W9 | R116 | 1:E4 | 1-N5 | R252 | 1:J5 | 1-D0 | R426 | 1:L8 | 1-T8 |
| | | 1-W8 | R117 | 1:E4 | 1-M6 | R254 | 1:H4 | 1-D2 | R427 | 1:L8 | 1-U8 |
| | | 1-W9 | R118 | 1:E4 | 1-N6 | R255 | 1:J4 | 1-C2 | R428 | 1:K7 | 1-M9 |
| | | 1-W9 | R119 | 1:E4 | 1-O5 | R256 | 1:J4 | 1-D1 | R429 | 1:K6 | 1-N8 |
| | | 1-W8 | R120 | 1:F6 | 1-O4 | R257 | 1:J5 | 1-D0 | R430 | 1:L6 | 1-P9 |
| | | 1-W8 | R121 | 1:E6 | 1-O4 | R258 | 1:J5 | 1-E0 | R431 | 1:K6 | 1-P8 |
| | | 1-W9 | R131 | 1:E6 | 1-U4 | R259 | 1:K4 | 1-B0 | R432 | 1:L6 | 1-Q9 |
| P5 | 1:B3 | 1-P8 | R132 | 1:D3 | 1-U6 | R260 | 1:H4 | 1-D2 | R433 | 1:K6 | 1-Q9 |
| | | 1-P8 | R133 | 1:D6 | 1-U4 | R261 | 1:J4 | 1-C2 | R434 | 1:J6 | 1-R9 |
| | | 1-P6 | R135 | 1:E6 | 1-U4 | R262 | 1:G3 | 1-B2 | R437 | 1:L9 | 1-V6 |
| | | 1-P7 | R138 | 1:C2 | 1-P7 | R263 | 1:K4 | 1-C0 | | | |
| | | 1-P6 | R140 | 1:F6 | 1-P4 | R264 | 1:K4 | 1-C0 | SHIELD | 1:D4 | |
| | | 1-S6 | R140A | 1:E6 | 1-P4 | R265 | 1:K4 | 1-C1 | S4 | 1:B10 | 1-W1 |
| | | 1-S7 | R141 | 1:F6 | 1-P4 | R269 | 1:H4 | 1-E1 | | | |
| | | 1-P7 | R142 | 1:F7 | 1-R4 | R270 | 1:H4 | 1-E0 | TP2 | 1:F3 | 1-J9 |
| | | 1-P7 | R142A | 1:F7 | 1-P4 | R271 | 1:H5 | 1-F0 | TSP5 | 1:D4 | 1-N4 |
| | | 1-P7 | R143 | 1:E7 | 1-S4 | R272 | 1:H4 | 1-F1 | TSP7 | 1:E7 | 1-S4 |
| P6 | 1:J1 | 1-H9 | R143A | 1:E7 | 1-Q4 | R273 | 1:H4 | 1-F2 | TP301 | 1:A9 | 1-S1 |
| | | 1-H9 | #R144 | 1:E7 | 1-R4 | R274 | 1:H5 | 1-G1 | | | |
| | | 1-D8 | R144A | 1:F7 | 1-S4 | R275 | 1:G4 | 1-F0 | | | |
| | | 1-D9 | R145 | 1:F7 | 1-R4 | R276 | 1:H5 | 1-F0 | | | |
| | | 1-D8 | R145A | 1:E7 | 1-S4 | R277 | 1:G5 | 1-F0 | | | |
| | | 1-H8 | R146 | 1:F6 | 1-S5 | R278 | 1:L3 | 1-I4 | | | |
| | | 1-D9 | R147 | 1:E6 | 1-S5 | R279 | 1:G4 | 1-F1 | | | |
| | | 1-D9 | R148 | 1:E6 | 1-S5 | R280 | 1:G5 | 1-G0 | | | |
| | | 1-H8 | R149 | 1:E7 | 1-T5 | R281 | 1:G5 | 1-G0 | | | |
| | | 1-H8 | R150 | 1:E6 | 1-T4 | R282 | 1:G1 | 1-E7 | | | |
| P7 | 1:K8 | 1-V7 | R151 | 1:B2 | 1-K7 | R283 | 1:G5 | 1-G0 | | | |
| | | 1-V7 | R152 | 1:B2 | 1-K6 | R284 | 1:F2 | 1-J4 | | | |
| | | | RV153 | 1:B1 | 1-L6 | R285 | 1:L2 | 1-I4 | | | |
| Q100 | 1:F6 | 1-O4 | R153 | 1:F6 | 1-O4 | R286 | 1:K2 | 1-I3 | | | |
| Q101 | 1:B5 | 1-Q2 | R154 | 1:F6 | 1-Q4 | R287 | 1:L2 | 1-I4 | | | |
| Q102 | 1:A4 | 1-R3 | R155 | 1:C1 | 1-N7 | R288 | 1:L2 | 1-J4 | | | |
| Q103 | 1:E4 | 1-N5 | R156 | 1:C2 | 1-N8 | R300 | 1:K6 | 1-J2 | | | |
| Q105 | 1:E6 | 1-P4 | R157 | 1:C1 | 1-N7 | R301 | 1:G6 | 1-H0 | | | |
| Q106 | 1:F7 | 1-Q4 | R158 | 1:C1 | 1-N7 | R302 | 1:G6 | 1-H0 | | | |
| Q107 | 1:F7 | 1-R4 | R159 | 1:C2 | 1-P8 | R303 | 1:G7 | 1-H0 | | | |
| Q108 | 1:E7 | 1-S4 | R160 | 1:B1 | 1-L8 | R304 | 1:H6 | 1-I0 | | | |
| Q109 | 1:E6 | 1-T4 | R161 | 1:C1 | 1-M6 | R305 | 1:G8 | 1-I0 | | | |
| Q110 | 1:E6 | 1-U4 | R194 | 1:C2 | 1-O6 | R306 | 1:H6 | 1-L1 | | | |
| Q115 | 1:C1 | 1-N6 | R195 | 1:L1 | 1-A7 | R307 | 1:H6 | 1-I0 | | | |
| Q200 | 1:J2 | 1-C7 | R196 | 1:F3 | 1-J7 | R308 | 1:H8 | 1-J1 | | | |
| Q201 | 1:J2 | 1-B7 | R197 | 1:F3 | 1-I7 | R309 | 1:H8 | 1-K0 | | | |
| Q202 | 1:H1 | 1-D7 | R198 | 1:C2 | 1-M7 | R310 | 1:G8 | 1-K0 | | | |
| Q203 | 1:H2 | 1-C5 | R199 | 1:F3 | 1-J9 | R311 | 1:J6 | 1-J1 | | | |
| Q204 | 1:H2 | 1-C5 | R200 | 1:J2 | 1-C7 | R312 | 1:J6 | 1-K1 | | | |
| Q205 | 1:J3 | 1-D4 | R201 | 1:J2 | 1-C7 | R313 | 1:H8 | 1-L1 | | | |
| Q206 | 1:H3 | 1-D5 | R202 | 1:J2 | 1-C7 | R314 | 1:G10 | 1-M1 | | | |
| Q207 | 1:J2 | 1-E5 | R213 | 1:K2 | 1-B6 | R315 | 1:G10 | 1-M0 | | | |
| Q208 | 1:J2 | 1-E5 | R214 | 1:J1 | 1-B7 | R316 | | 1-O0 | | | |
| Q209 | 1:H3 | 1-E4 | R217 | 1:H4 | | R317 | 1:F8 | 1-N1 | | | |
| Q210 | 1:K2 | 1-F4 | R218 | 1:H1 | 1-C7 | R318 | 1:D8 | 1-O1 | | | |
| Q211 | 1:G1 | 1-E7 | R219 | 1:J1 | 1-D7 | R318A | 1:D8 | 1-O1 | | | |
| Q212 | 1:K4 | 1-C0 | R220 | 1:H1 | 1-D7 | R319 | 1:F10 | 1-M1 | | | |
| Q213 | 1:L4 | 1-B1 | R221 | 1:H1 | 1-D7 | R320 | 1:B10 | 1-W0 | | | |
| Q214 | 1:J5 | 1-E0 | RV222 | 1:H2 | 1-C6 | R321 | 1:G6 | 1-H0 | | | |
| Q215 | 1:J5 | 1-E0 | R222 | 1:K1 | 1-F7 | R322 | | 1-O0 | | | |
| Q216 | 1:G5 | 1-F0 | R223 | 1:H2 | 1-B5 | R323 | 1:G6 | 1-H0 | | | |
| Q300 | 1:H7 | 1-J0 | R224 | 1:H2 | 1-C6 | RV324 | 1:E7 | 1-U2 | | | |
| Q301 | 1:G6 | 1-H0 | R225 | 1:G2 | 1-B5 | R324 | 1:F7 | 1-I1 | | | |
| Q302 | 1:G8 | 1-K0 | R226 | 1:H2 | 1-C5 | #R325 | 1:C9 | 1-P1 | | | |
| Q303 | 1:J6 | 1-J1 | R227 | 1:H2 | 1-C5 | R326 | 1:D7 | 1-U2 | | | |
| Q304 | 1:J6 | 1-K1 | R228 | 1:G2 | 1-C5 | R327 | 1:J6 | 1-V2 | | | |
| Q305 | 2:F9 | 1-N0 | R229 | 1:H3 | 1-D4 | R328 | 1:D7 | 1-R1 | | | |
| Q306 | 2:E9 | 1-P0 | R230 | 1:J3 | 1-D4 | R329 | 1:A9 | 1-T1 | | | |
| Q307 | 1:H7 | 1-Q1 | R231 | 1:H3 | 1-D5 | R330 | 1:A9 | 1-U1 | | | |
| Q308 | 1:H7 | 1-Q1 | R232 | 1:H2 | 1-D5 | R331 | | 1-O0 | | | |
| Q309 | 1:H7 | 1-R2 | R233 | 1:H2 | 1-E4 | R332 | 1:B10 | 1-V1 | | | |
| Q401 | 1:L7 | 1-O9 | R234 | 1:H2 | 1-E5 | R333 | 1:J6 | 1-K2 | | | |
| Q402 | 1:L6 | 1-P9 | R235 | 1:J2 | 1-F5 | R334 | 1:H6 | 1-Q2 | | | |
| R100 | 1:A5 | 1-R3 | R236 | 1:K3 | 1-F5 | R335 | 1:H6 | 1-R1 | | | |
| R101 | 1:A4 | 1-S3 | R237 | 1:L3 | 1-F5 | R336 | 1:H7 | 1-Q1 | | | |
| R102 | 1:A4 | 1-S3 | R238 | 1:K3 | 1-F4 | R337 | 1:E7 | 1-U2 | | | |
| R103 | 1:A5 | 1-R3 | R239 | 1:K2 | 1-G4 | R338 | 1:H7 | 1-Q2 | | | |
| R104 | 1:A5 | 1-Q3 | R240 | 1:K2 | 1-G4 | R339 | 1:H7 | 1-Q2 | | | |
| R105 | 1:A4 | 1-S3 | R241 | 1:J3 | 1-G5 | R340 | 1:A9 | 1-T2 | | | |
| R106 | 1:B4 | 1-Q3 | R242 | 1:J3 | 1-H4 | R341 | 1:A8 | 1-U1 | | | |
| R107 | 1:C4 | 1-O3 | R243 | 1:J3 | 1-H4 | R342 | 1:H7 | 1-Q1 | | | |
| R108 | 1:D4 | 1-N3 | R244 | 1:K3 | 1-I3 | R350 | 1:G7 | 1-I0 | | | |
| R109 | 1:D4 | 1-L3 | R245 | 1:H3 | 1-D3 | R418 | 1:J2 | 1-D6 | | | |



T2000-100 RF PCB (IPN 220-01331-02) - Bottom Side



T2000-100 RF PCB (IPN 220-01331-02) - Top Side



| REV/ISS | AMENDMENTS | DRAWN | CHKD | D.O. | APVD | DATE |
|---------|----------------------------------|-------|------|------|------|----------|
| 2B | UPDATED VOLTAGE TABLES | MC | TC | | | 26/11/96 |
| 2A | CHANGED TRANSMITTER LAYOUT | MC | TC | | | 11/03/95 |
| 1A | CHANGED TO TRANSMITTER AND SYNTH | MC | TC | | | 15/11/94 |
| P1 | LAYOUT FOR 220-270 MHZ | J.F. | J.F. | | | 26/9/94 |

| | | | |
|------------------------|-----------|------------|------------|
| © TAIT ELECTRONICS | | | |
| T2000-100 MOBILE RADIO | | | |
| 220-270MHZ | | | |
| PROJECT: | DESIGNER: | FILE NAME: | FILE DATE: |
| 220-01331-02 | JOE | 2K1MVL2B | 26/11/95 |
| NO SHEETS: | | | |
| 1 | | | |

